

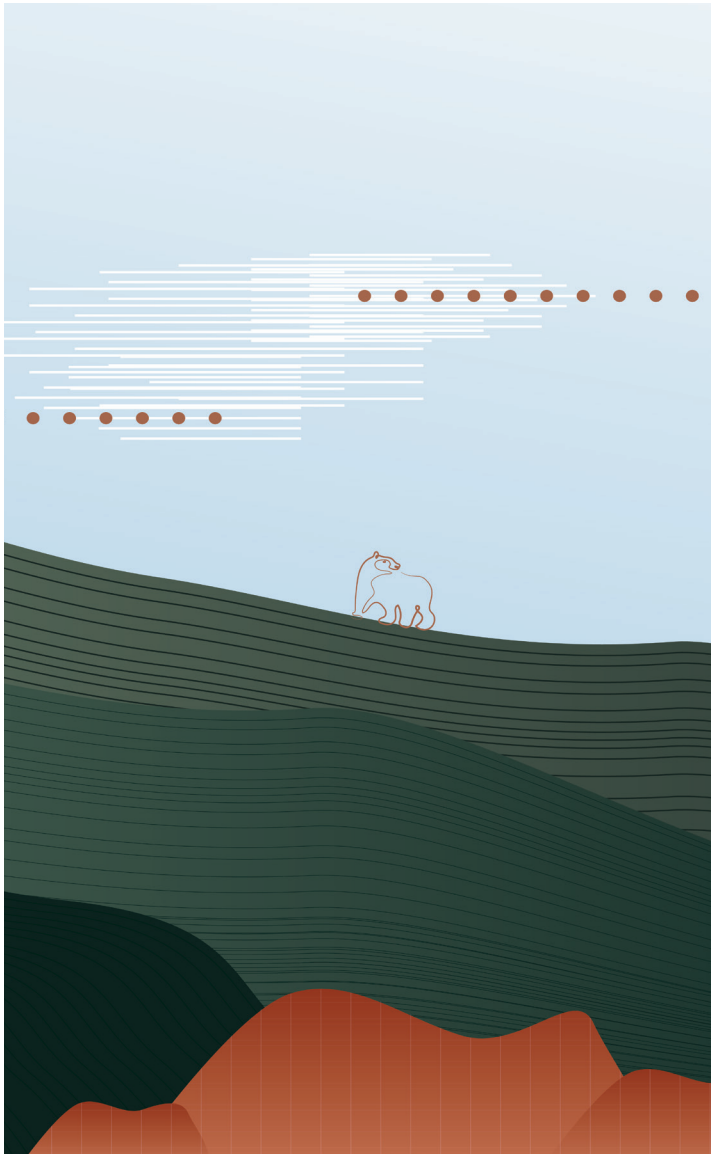
The image features a vertical wall of dense, multi-colored greenery, including various leafy plants and tall, thin grasses. Three rectangular windows are arranged vertically, each showing a different interior space. The top window shows a modern interior with circular pendant lights and a dark wooden table. The middle window shows a bright interior with large windows and people. The bottom window shows a dark interior with a wooden floor and a table.

Field Guide

UNIVERSITY OF CALIFORNIA BERKELEY
ANCHOR HOUSE

ANCHOR HOUSE

Home, *Inspired*



The Helen Diller Anchor House is designed to encourage curious minds and provide students with a platform for growth. The spaces foster well-being and community, integrating light and nature, seamless indoor-outdoor movement, opportunities for chance interactions, and moments of reflection—all complemented by restorative amenities.

Helen and Sanford Diller met at UC Berkeley in 1950. The Helen Diller Foundation funded the grant to build Anchor House, gifted to UC Berkeley in 2024. The building generates revenue to fund its operations and provide an estimated 400 annual scholarships for Pell-grant eligible students, ensuring ongoing support for future generations.

WELCOME HOME, BEARS.

THE LANDING

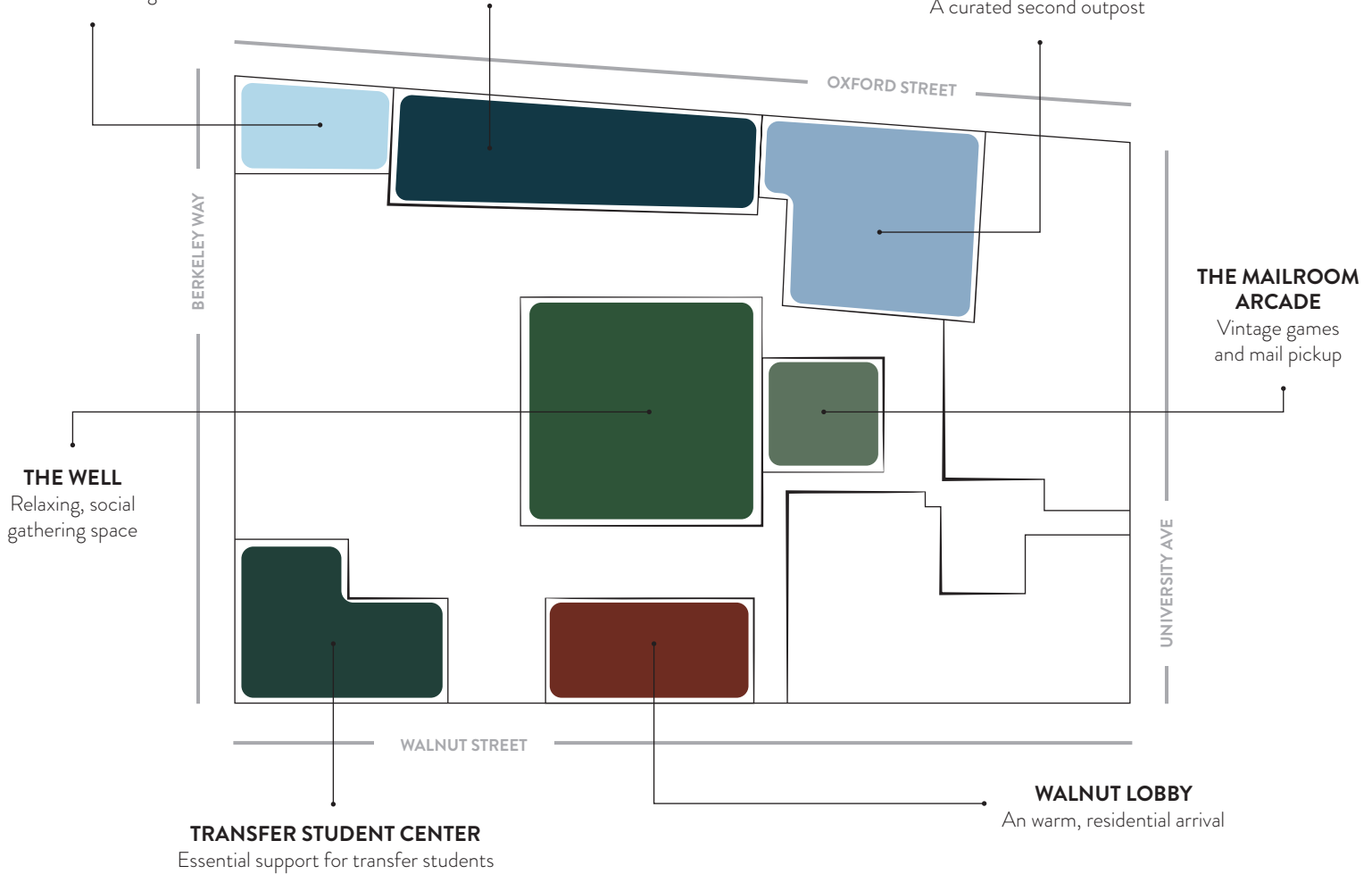
Storage for students on the go

OXFORD HALL

Inviting arrival, comfortable hangout

THE CAL STORE

A curated second outpost



GROUND FLOOR

GROUND FLOOR

Oxford Hall

Oxford Hall is the front door to Anchor House. Its gate design, reflecting the arches of Walter Ratcliff's 1930s brick garage that once occupied the site, sets the tone for a welcoming space. The natural light, warm tones, and thoughtfully proportioned interiors, combined with playful seating arrangements, make Oxford Hall the perfect blend of inviting arrival and comfortable hangout.

AT THE RECEPTION TABLE, YOU'LL FIND THREE CAL BEAR-INSPIRED ORIGAMI PIECES BY ARTIST AND UC BERKELEY ALUM BERNIE PEYTON, EACH CRAFTED FROM A SINGLE PIECE OF PAPER. THE BOOKSHELVES SHOWCASE HISTORIC UC BERKELEY ARTIFACTS, VINTAGE YEARBOOKS, AND MEMORABILIA, ADDING A TOUCH OF HISTORY AND CHARM TO THE HALL.

Transfer Student Center

The Transfer Student Center provides essential services to UC Berkeley transfer students, focusing on supporting a successful transition, fostering connections and a sense of community, and empowering students as they explore and pursue their academic and career goals.

The Well

At the heart of the ground floor experience, The Well is designed to encourage a moment of pause and relaxation, a space where students can gather and socialize in a calm, inviting atmosphere.

Concrete columns and a sunken lounge, reminiscent of a nostalgic mid-century conversation pit, draw the focus of activity to the core of the room. A central skylight adds to the ambiance, providing a peek to the outdoors above.

AT THE FRONT OF THE WELL IS THE CONCIERGE DESK, FEATURING A GRAPHIC OF A CALIFORNIA LANDSCAPE WITH A NOD TO THE CAL BEAR, AND A PACKAGE ROOM, ENSURING THAT ALL YOUR NEEDS ARE CONVENIENTLY MET.

The Mail Room Arcade

The Mailroom Arcade hosts a variety of nostalgic arcade games, as well as a foosball table with players dressed in Cal versus Stanford uniforms. Adding to the nostalgic atmosphere, the artwork includes framed vintage Cal athletic jerseys, making the Mailroom Arcade a fun and engaging spot for students to unwind and connect. Oh and students can pick up their mail here, too.

Cal Store Outpost

The second outpost of the Cal Store, reimagined with a cleaner, more curated aesthetic. Designed by Olle Lundberg from San Francisco, known for his work on the Slanted Door restaurants.

THE ARTWORK INCLUDES A LARGE-SCALE REPRODUCTION OF A VINTAGE PHOTOGRAPH FROM THE 1960 BLUE AND GOLD YEARBOOK, DEPICTING STUDENTS IN A 'C' FORMATION AT MEMORIAL STADIUM.

The Landing

Anchor House is designed to support the day-to-day lives of both residents and commuter students. With the built-in lockers at The Landing, commuter students have a secure place to store their books and backpacks while they are in the building or out on campus, making their days a little lighter.

THE LANDING SHOWCASES A SERIES OF THREE ORIGINAL WATERCOLORS OF UNIVERSITY HOUSE, CIRCA 1922, PROVIDING A GLIMPSE INTO THE UNIVERSITY'S RICH HISTORY AND ADDING AN ARTISTIC TOUCH TO THE ENVIRONMENT.

Walnut Lobby

A nod to the classic California train station, Walnut Lobby serves as the more intimate, residential arrival to Anchor House. Featuring a prominent clock inspired by the Campanile, this lobby exudes a timeless charm. The lobby desk is adorned with historic watercolors of university buildings, adding a touch of nostalgia and elegance to the welcoming space.

THE ART STUDIO

Flexible maker space for creativity

THE COURTYARD

Outdoor social and study space

THE HIDEAWAY

The perfect hidden nook

THE HILL

Social staircase for spontaneous fun

THE PANTRY

A cozy spot to eat and hang

THE PORCH

Comfortable covered outdoor space

THE CULINARY CLASSROOM

Hands-on culinary and sustainability workshop

SERENITY STUDIO

Tranquil space for yoga and meditation

THE SEQUOIA ROOM

Wood-paneled versatile event room

FITNESS CENTER

Nature-inspired workout studio



SECOND FLOOR

SECOND FLOOR

The Fitness Center & Serenity Studio

Double rows of windows integrate the greenery and landscaping of the courtyard into the space, creating a seamless connection with nature. The effect is further highlighted by the large-scale mural of the California landscape, adorning the top of both the fitness space and the Serenity Studio.

Designed to support a variety of workouts, the Fitness Center and Serenity Studio encourage students to embrace healthy practices. Whether you are peacefully reflecting during yoga, training for a marathon, or getting swole on the bench press, each activity is thoughtfully integrated into the design

THE CORRIDOR OFF THE RECEPTION AREA FEATURES ORIGINAL NEW YORK TIMES PRINTING PLATES FROM A 1970 COVER STORY ON THE CHANCELLOR APPOINTMENT. ADDITIONALLY, THE LOCKER ROOM SHOWCASES A PAIR OF LITHOGRAPHS BY THE RENOWNED BERKELEY GRAPHIC ARTIST AND PRINTMAKER DAVID LANCE GOINES, ADDING A TOUCH OF ARTISTIC HERITAGE TO THE SPACE.

The Sequoia Room

Our very own natural wonder, where every wall is adorned with wood salvaged from a single 250-foot-tall Sequoia from Sequoia National Park. Having naturally succumbed to winds, it finds new life in the beautiful paneling of this room. The Sequoia Room is an ideal setting for lectures, galas, banquets, conferences, meetings, or simply for students to study and gather.

ENHANCING THE ROOM'S ELEGANCE, ARTIST VANHA LAM CREATED A SERIES OF SIX ORIGAMI PAINTINGS IN JAPANESE INDIGO, ADDING A TOUCH OF REFINED ARTISTRY TO THIS VERSATILE SPACE. THE LARGE-SCALE PAINTING IS BOSTON CREMES BY CALIFORNIA ARTIST WAYNE THIEBAUD.

The Culinary Classroom

The kitchen is the heart of every good home, and Anchor House is no different. The Culinary Classroom serves as an educational center for the Rausser College of Natural Resources, providing a space where students can learn and explore culinary arts and nutrition in a hands-on environment.

The Pantry

The Pantry is a cozy spot to eat and hang out while spying—I mean, looking out—over your friends in the North Courtyard.

The Art Studio

Run by the Berkeley Art Studio, this maker space is a multi-functional blank canvas with classes for both students and the Berkeley community. Designed for ultimate flexibility, the Art Studio gives students the tools to embrace all their creative pursuits, providing a space to explore and develop their artistic talents.

The Courtyard

Step into the Courtyard for social gatherings, studying, or simply enjoying the outdoors without even leaving home.

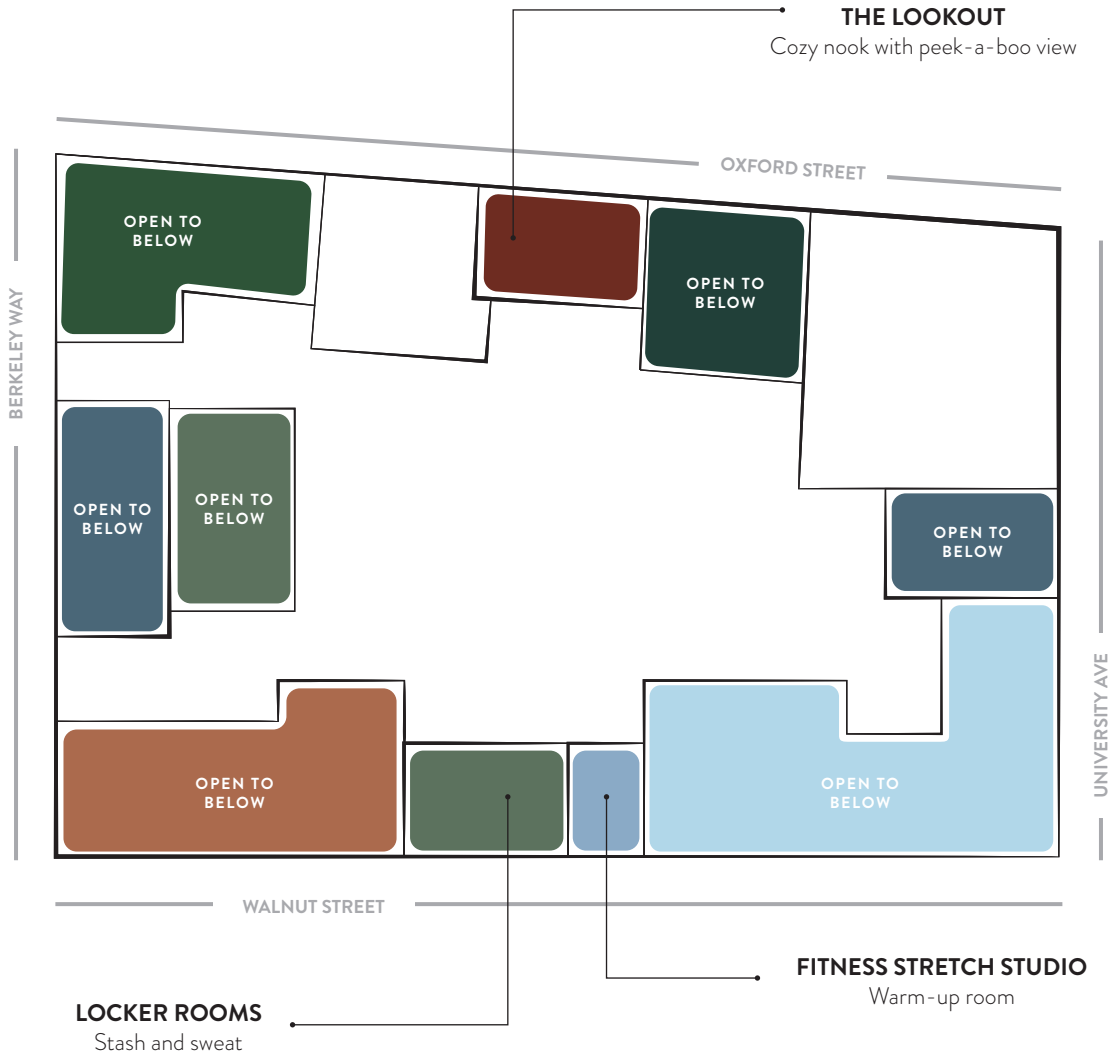
THE BRICK ARCHES ARE INSPIRED BY ARCHITECT WALTER RATCLIFF'S 1930S-ERA BRICK GARAGE THAT ONCE OCCUPIED THE SITE, WITH ALL THE BRICKS SOURCED FROM THE ORIGINAL STRUCTURE.

The Hill

Ideal for a quick game of shuffleboard, or if you just need a place to perch, The Hill is an oversized, social staircase that encourages walking, sprawling, and spontaneous interactions, making it a fun and engaging climb.

The Hideaway

The perfect hidden nook to study, hang, and gather.



THIRD FLOOR

THIRD FLOOR

The Lookout

Another cozy spot to curl up with a book or study with friends, with a peek-a-boo window into The Oxford Lobby below.

STUDENT APARTMENTS

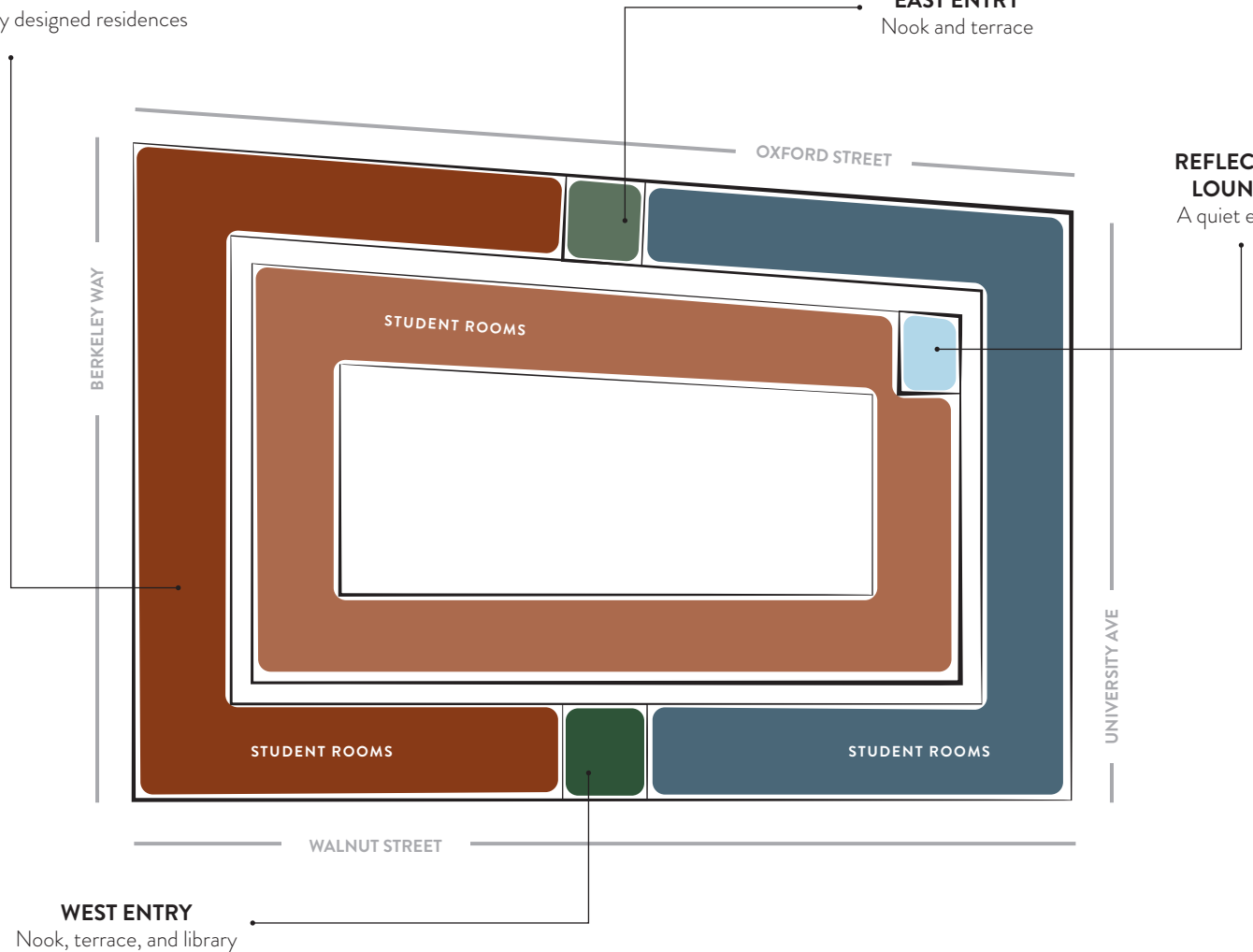
Intentionally designed residences

EAST ENTRY

Nook and terrace

REFLECTION LOUNGE*

A quiet escape



*Reflection Lounges can be accessed on floors 4, 7, 10, and 13

STUDENT FLOORS (4-12)

STUDENT FLOORS

(4-12)

Student Floors

The elevator lobbies at Anchor House are designed as a multifunctional area where students can hang out, wait for the elevator, and study. Each floor features an entry nook off the elevator, providing a respite area to enjoy views and browse books on the local landscape.

Specific floors are tailored to different activities:

Floors 5, 6, 8, 9, 11, 12, and 14 feature study nooks ideal for focused academic work.

Floors 4, 7, 10, and 13 include reflection lounges and terraces, perfect for quiet contemplation and enjoying outdoor space.

Student Apartments

The apartments at Anchor House are designed with intention, featuring kitchens and living rooms perfect for cooking, socializing, and studying. Each student's room includes a built-in desk modeled after the classic Eames desk, positioned along the window wall to allow maximum light and views. The desk spans the entire length of the wall, providing ample workspace.

Adding a personal touch, the wall coverings at the desk and the armoire fronts are Forbo pinboards, giving students the opportunity to decorate and personalize their new home to their liking.

THIRTEENTH FLOOR

The Venue

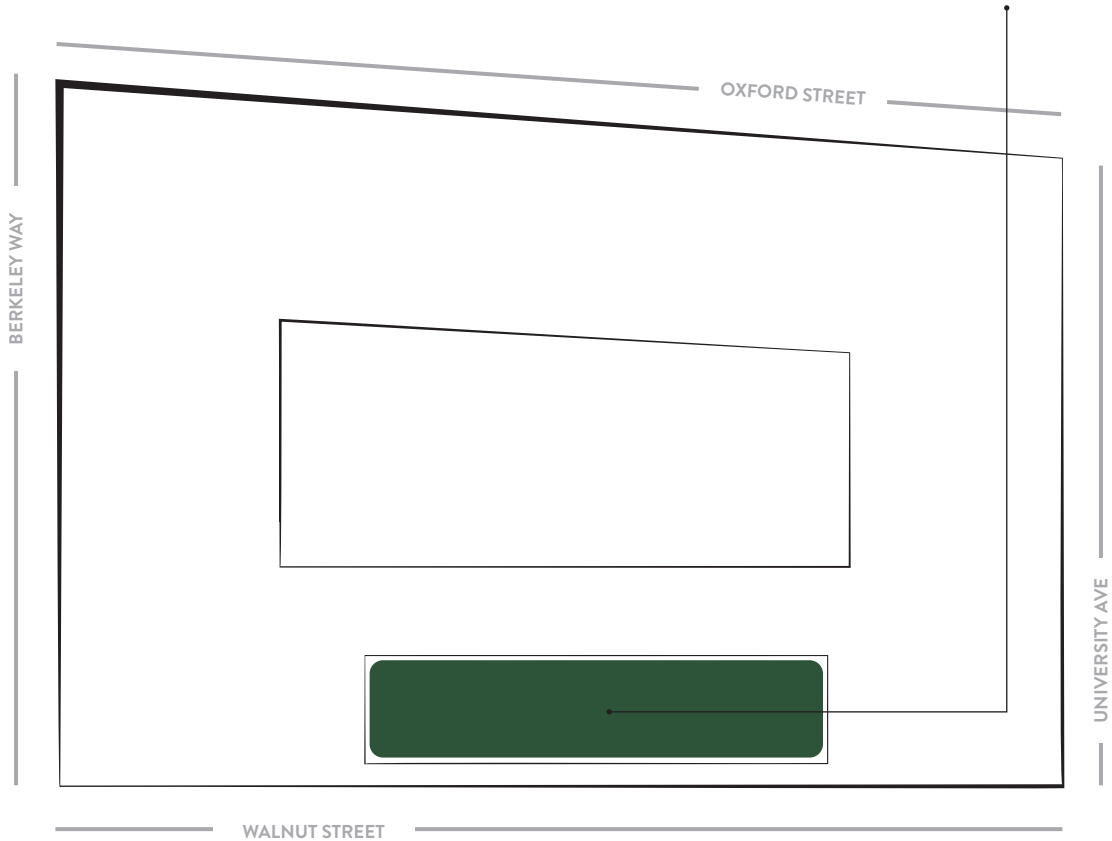
Designed to impress, The Venue evokes the comforts and relaxation of home through its carefully curated sequence and atmosphere. Guests are welcomed into intimate spaces like the foyer and living room, adorned with bespoke and curated Cal memorabilia on display.

The grand double-height room frames stunning views of the Bay Bridge and Bay, making it perfect for hosting any number of functions. Seamless connection to the terraces enhances the experience, and original work by California sculptor Stan Bitters inset into the brick walls adds an artistic touch to the outdoor environment.

THE TOP OF THE VENUE SHOWCASES FOUR
CUSTOM TAPESTRIES BY SWEDISH FIBER ARTIST
LINA ZEDIG.

ROOFTOP GARDEN

Urban rooftop garden with produce



THE ROOFTOP

THE ROOF

Rooftop Garden

The rooftop at Anchor House features a working garden that produces seasonal produce. This space not only provides fresh ingredients but also offers students a chance to engage with sustainable practices and enjoy the benefits of urban gardening.



HELEN DILLER
ANCHOR HOUSE

08/01
21

